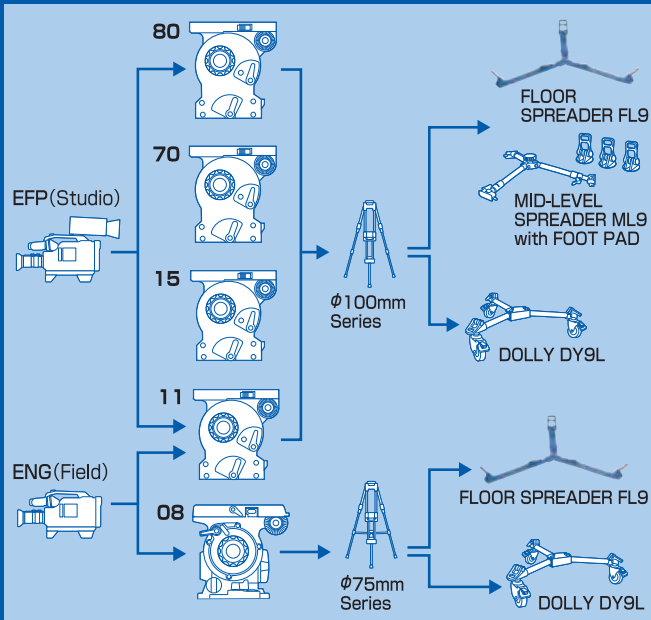
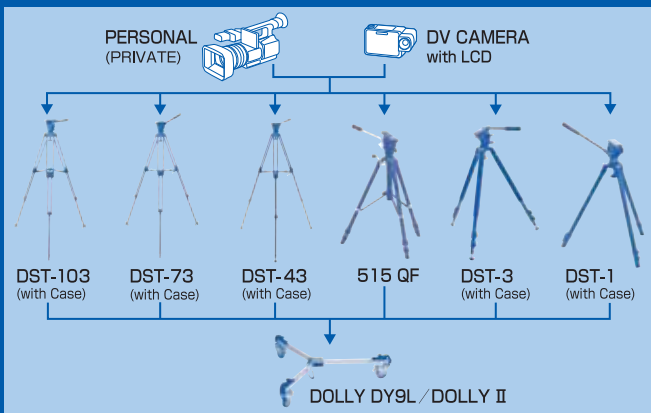


BROADCAST SYSTEM CHART



EDUCATIONAL / PERSONAL



DAIWA

BROADCAST CAMERA SUPPORTS

SLIK CORPORATION

853 Kayama, Hidaka-City, Saitama 350-1231, Japan
 Phone. 81-42-989-0990 FAX. 81-42-989-2444
<http://www.slik.com/>

DAIWA

BROADCAST CAMERA SUPPORTS

Manufacturing professional broadcast, industrial, educational and security camera support products for over 50 years.



SYSTEMS



DAIWA 15

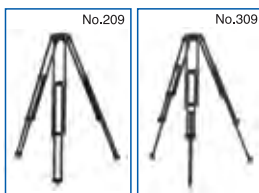
M1 / M2 / F1 / F2 / D1



DAIWA 15	Head	Tripod	Spreader	Case
M1	DAIWA 15	No. 209	ML9	1080-9
M2	DAIWA 15	No. 309	ML9	890-9
F1	DAIWA 15	No. 209	FL9	1080-9
F2	DAIWA 15	No. 309	FL9	890-9
D1	DAIWA 15	No. 209	DY9L	—

DAIWA 80

M1 / M2 / F1 / F2 / D1



DAIWA 80	Head	Tripod	Spreader	Case
M1	DAIWA 80	No. 209	ML9	1080-9
M2	DAIWA 80	No. 309	ML9	890-9
F1	DAIWA 80	No. 209	FL9	1080-9
F2	DAIWA 80	No. 309	FL9	890-9
D1	DAIWA 80	No. 209	DY9L	—

DAIWA 11

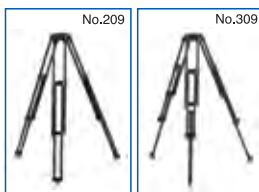
M1 / M2 / F1 / F2 / D1



DAIWA 11	Head	Tripod	Spreader	Case
M1	DAIWA 11	No. 209	ML9	1080-9
M2	DAIWA 11	No. 309	ML9	890-9
F1	DAIWA 11	No. 209	FL9	1080-9
F2	DAIWA 11	No. 309	FL9	890-9
D1	DAIWA 11	No. 209	DY9L	—

DAIWA 70

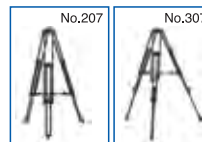
M1 / M2 / F1 / F2 / D1



DAIWA 70	Head	Tripod	Spreader	Case
M1	DAIWA 70	No. 209	ML9	1080-9
M2	DAIWA 70	No. 309	ML9	890-9
F1	DAIWA 70	No. 209	FL9	1080-9
F2	DAIWA 70	No. 309	FL9	890-9
D1	DAIWA 70	No. 209	DY9L	—

DAIWA 08

M1 / M2 / F1 / F2



DAIWA 08	Head	Tripod	Spreader	Case
M1	DAIWA 08	No. 207	included	1030 UL
M2	DAIWA 08	No. 307	included	890-9
F1	DAIWA 08	No. 207	FL9	1030 UL
F2	DAIWA 08	No. 307	FL9	890-9

HEADS (Bowl type)

100mm



Model No.	DAIWA 80
Height	11.2 in. (285mm)
Weight	9.7 lbs. (4.4kgs)
Capacity	26 to 48.5 lbs. (12 to 22kgs)
Tilt Range	+60° to -60°
Pan Range	360°
Ball Base	100mm
Drag / Friction	Variable Viscosity, user adjustable
Temperature Range	-4°F ~ +140°F (-20°C ~ +60°C)

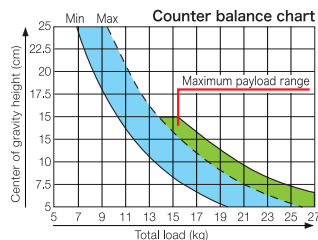
DAIWA 80

Heavy Duty Fluid Video Head

■ The DAIWA 80 heavy-duty pan head is an upgraded version of the DAIWA EP 56. The DAIWA 80 is well suited for both ENG/EFP and studio applications.

The bubble level has been upgraded with a backlight that stays on for 1 minute after the button is pressed giving the camera operator plenty of time to level the head when setting up in a dark studio, arena or night-time location shoot.

The DAIWA 80 has a professional Cam-Balance system capable of counter-weighting up to 48.5 pounds of camera and equipment. The sealed, oil-filled fluid head glides with silky smoothness yielding ultimate control to the camera operator. To further customize the head to the equipment being used, the DAIWA 80 has an infinitely adjustable and repeatable pan and tilt drag settings.



100mm



Model No.	DAIWA 70
Height	11.2 in. (285mm)
Weight	9.7 lbs. (4.4kgs)
Capacity	18 to 33 lbs. (8 to 15kgs)
Tilt Range	+90° to -75°
Pan Range	360°
Ball Base	100mm
Drag / Friction	Variable Viscosity, user adjustable
Temperature Range	-4°F ~ +140°F (-20°C ~ +60°C)

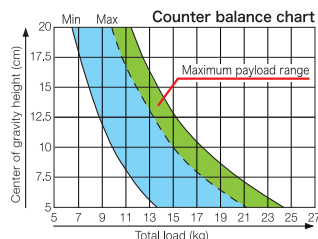
DAIWA 70

Heavy Duty Fluid Video Head

■ The DAIWA 70 heavy-duty pan head is an upgraded version of long-time industry standard DAIWA 15 head. This head is well suited for both ENG /EFP and studio applications.

Improvements include a slightly tall head than the DAIWA 15 that allow a wider tilt range of +90° to -75° adding 15° to the negative tilt range. The bubble level has been upgraded with a backlight that stays on for 1 minute after the button is pressed giving the camera operator plenty of time to level the head in low-lighting conditions.

The DAIWA 70 has a professional Cam-Balance system capable of counter-weighting up to 33 pounds of camera and equipment. The sealed, oil-filled fluid head glides with silky smoothness yielding ultimate control to the camera operator. To further customize the head to the equipment being used, the DAIWA 70 had an infinitely adjustable and repeatable pan and tilt drag settings.



100mm



Model No.	DAIWA 15	Pan Range	360°
Weight	9.25 lbs. (4.2kgs)	Ball Base	100mm Claw type
Capacity	18 to 33 lbs. (8 to 15kgs)	Drag / Friction	Variable Viscosity- Field Adj.
Tilt Range	+90° to -60°	Temperature Range	-4°F ~ +140°F (-20°C ~ +60°C)

DAIWA 15

CAM BALANCE SYSTEM

- Excellent heavy-duty fluid head for both ENG and EFP / Studio applications
- Perfect counter balance for DV camcorders throughout the tilt range of +90° to -60°
- Unsurpassed smoothness and a personalized feel is provided by infinitely adjustable and repeatable drag settings
- Created to perform with DV cameras weighing from 18 to 33 lbs. (8 to 15kgs)

100mm



Model No.	DAIWA 11	Pan Range	360°
Weight	9.25 lbs. (4.2kgs)	Ball Base	100mm Claw type
Capacity	13 to 25 lbs. (6 to 11kgs)	Drag / Friction	Variable Viscosity- Field Adj.
Tilt Range	+90° to -60°	Temperature Range	-4°F ~ +140°F (-20°C ~ +60°C)

DAIWA 11

CAM BALANCE SYSTEM

- Sharing the same feature set with the Daiwa 15, the Daiwa 11 is a heavy-duty fluid head for moderately weighted cameras
- Superior performance with cameras weighing 13 to 25 lbs. (6 to 11kgs)
- Once mounted and balanced, the camera load is perfectly counter balanced throughout the tilt range of +90° to -60°
- Full range of controls including infinitely adjustable drag for tilt and pan movements

75mm



Model No.	DAIWA 08	Pan Range	360°
Weight	7.04 lbs. (3.3kgs)	Ball Base	75mm Claw type
Capacity	13 to 20 lbs. (6 to 9kgs)	Drag / Friction	Variable Viscosity- Field Adj.
Tilt Range	+90° to -75°	Temperature Range	14°F ~ +122°F (-10°C ~ +50°C)

DAIWA 08

CAM BALANCE SYSTEM

- One of the most popular sized heads in the broadcast community, more and more users are discovering the Daiwa 08 as lighter-weight DV cameras proliferate
- The professional Cam Balance System creates smooth performance with a full range of drag controls for tilt and pan movements
- A compact design and all metal construction offer years of outstanding reliability
- Designed for outstanding performance with DV cameras weighing 13 to 20 lbs. (6 to 9kgs)

TRIPOD LEGS

100mm



*Floor Spreader is not included

No.309C 100mm

- Carbon fiber legs
- Maximum height of 62 inches (1,574mm)
- Three leg sections for greater capacity
- 100mm bowl for mounting heads
- Perfect for Daiwa 80, Daiwa 70, Daiwa 15, Daiwa 11 and other heads with 100mm mount
- Same specification as No.309

Model No.	309C
Max. Height	62 in. (1,574mm)
Min. Height	17.44 in. (443mm)
Weight	6.32lbs. (2.9kg)
Ball Base	100mm
Leg Sections	Three (3)

75mm

**No.307** 75mm

- Three leg sections for greater capacity
- 75mm bowl for mounting heads
- Perfect for Daiwa 08 and other heads with 75mm mount
- Mid-level spreader included (removable)

Model No.	307
Max. Height	61.02 in. (1,550mm)
Min. Height	28.93 in. (735mm)
Weight	5.67lbs. (2.6kg) *includes MID-LEVEL SPREADER
Ball Base	75mm
Leg Sections	Three (3)

**No.309** 100mm

- Maximum height of 62 inches (1,574mm)
- Three leg sections for greater capacity
- 100mm bowl for mounting heads
- Perfect for Daiwa 80, Daiwa 70, Daiwa 15, Daiwa 11 and other heads with 100mm mount

Model No.	309
Max. Height	62 in. (1,574mm)
Min. Height	17.44 in. (443mm)
Weight	6.54lbs. (3.0kg)
Ball Base	100mm
Leg Sections	Three (3)

**No.207** 75mm

- Durable all aluminum rail construction
- Two leg sections for fast set-up and fold down
- Mid-level spreader included (removable)
- 75mm bowl for mounting heads
- Perfect for Daiwa 08 and other heads with 75mm mount

Model No.	207
Max. Height	57.28 in. (1,455mm)
Min. Height	24.50 in. (635mm)
Weight	5.22lbs. (2.4kg) *includes MID-LEVEL SPREADER
Ball Base	75mm
Leg Sections	Two (2)

**No.209** 100mm

- Maximum height of 61 inches (1,553mm)
- Two leg sections for fast set-up and fold down
- Durable all aluminum rail construction
- 100mm bowl for mounting heads
- Perfect for Daiwa 80, Daiwa 70, Daiwa 15, Daiwa 11 and other heads with 100mm mount

Model No.	209
Max. Height	61.14 in. (1,553mm)
Min. Height	28.58 in. (726mm)
Weight	6.32lbs. (2.9kg)
Ball Base	100mm
Leg Sections	Two (2)

**FL-9 FLOOR SPREADER**

Expandable floor spreader with rubber foot pads for added stability on smooth surfaces. Designed to be used with 207, 209, 307 and 309 SLIK tripods

Weight	1.6 lbs. (750g)
--------	-----------------

**DOLLY DY9L**

Heavy-duty dolly for use with 209 / 207 and 309 / 307 tripods

Radius	18.5 in. (470mm)
Weight	12.1 lbs. (5.5kgs)
Wheel Diameter	3.9 in. (100mm)

**ML-9
MID-LEVEL SPREADER
with FOOT PADS**

Designed for the SLIK 209 and 309 tripods, the ML-9 has telescoping arms to allow setting up on level or uneven surfaces

Weight	1.3 lbs. (600g)
--------	-----------------

**DOLLY II
with DOUBLE WHEEL LOCK SYSTEM**

Light-weight dolly for use with light weight tripod systems

Radius	20.0 in. (510mm)
Weight	8.91 lbs. (4.05kgs)
Wheel Diameter	3.0 in. (75mm)

LIGHT WEIGHT TRIPOD SYSTEMS

**DST-103** **NEW**

- High-stress components manufactured from die-cast aluminum
- 2 level oil friction control
- All metal head and aluminum sliding camera post
- Tilt range from +90° to -75°
- Bubble level with LED light (20 seconds auto off)

CAMERA MOUNT PLATE **6334** **NEW**

Model No.	DST-103
Max. Height	63.11 in. (1,603mm)
Min. Height	28.27 in. (718mm)
Weight	14.55 lbs. (6.6kg)
Capacity	13.23 to 22.05 lbs. (6 to 10kg)
Leg Sections	Three (3)
Ball Base	2.95 in. (75mm)

**DST-73** **NEW**

- High-stress components manufactured from die-cast aluminum
- All metal head and aluminum sliding camera post
- Tilt range from +90° to -90°
- Bubble level with LED light (20 seconds auto off)

CAMERA MOUNT PLATE **6333** **NEW**

Model No.	DST-73
Max. Height	62.59 in. (1,590mm)
Min. Height	28.78 in. (731mm)
Weight	10.36 lbs. (4.7kg)
Capacity	6.61 to 15.43 lbs. (3 to 7kg)
Leg Sections	Three (3)
Ball Base	2.95 in. (75mm)

**DST-43** **NEW**

- High-stress components manufactured from die-cast aluminum
- All metal head and aluminum sliding camera post
- Tilt range from +90° to -80°
- Bubble level with LED light (20 seconds auto off)

CAMERA MOUNT PLATE **6333** **NEW**

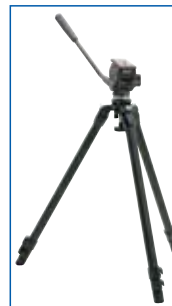
Model No.	DST-43
Max. Height	59.37 in. (1,508mm)
Min. Height	26.61 in. (676mm)
Weight	7.05 lbs. (3.2kg)
Capacity	up to 8.81 lbs. (up to 4kg)
Leg Sections	Three (3)
Ball Base	2.36 in. (60mm)

**DST-3**

- High-stress components manufactured from die-cast aluminum
- Multi-angle leg locks for very low angle positioning
- Excellent for light-weight Mini DV cameras and consumer camcorders
- All-metal head and quick release platform, separate tilt and pan locks and sliding camera post
- Tilt range from +52° to -90°
- 60mm ball leveler



Model No.	DST-3
Max. Height	60.43 in. (1,535mm)
Min. Height	29.72 in. (755mm)
Weight	6.28 lbs. (2.85kgs)
Capacity	6.6 lbs. (3.0kgs)
Leg Sections	Three (3)
Ball Base	2.36 in. (60mm)

**DST-1**

- Multi-angle leg locks for very low angle positioning
- Excellent performance with cameras weighing 6.6 lbs. (3.0kgs) or less which use a 1/4" camera mount screw and video pin
- Spring loaded fluid head for smooth movements
- 60mm ball leveler



Model No.	DST-1
Max. Height	54.13 in. (1,375mm)
Min. Height	26.57 in. (675mm)
Weight	4.32 lbs. (1.96kgs)
Capacity	6.6 lbs. (3.0kgs)
Leg Sections	Three (3)
Ball Base	2.36 in. (60mm)

**515QF**

- A combination of 505QF leg and Digital Balance Pro head offers great stability for a video camera and a spotting scope.
- Sliding quick release plate allows 152mm of sliding range
- Adopted exclusive grease makes smooth movement in wide range temperature (-15°C ~ +50°C)

Model No.	515QF
Max. Height	65.15 in. (1,655mm)
Min. Height	29.92 in. (760mm)
Weight	8.18 lbs. (3.72kgs)
Leg Sections	Three (3)

**505QF**

- Grooved tubular leg design offers maximum stability and allows you to extend the leg easily.
- Top section leg diameter 28mm
- Large size video tripod
- Adjustable pan handle angle

Model No.	505QF
Max. Height	64.57 in. (1,640mm)
Min. Height	29.53 in. (750mm)
Weight	7.93 lbs. (3.6kgs)
Leg Sections	Three (3)

**504QF II**

- Video Pan Head with extra long, adjustable control handle provides ultra smooth fluid effect
- Top section leg diameter 27mm
- For Video camera, 35mm SLR with 200mm telephoto lenses
- Adjustable pan handle angle

Model No.	504QF II
Max. Height	61.42 in. (1,560mm)
Min. Height	17.72 in. (450mm)
Weight	5.66 lbs. (2.57kgs)
Leg Sections	Three (3)

ACCESSORIES

REMOTE CONTROL PAN/TILT HEAD

**MVH-2D**

INNOVATIVE STRONG PAN-TILT HEAD

MVH2D is allowed to operate pan / tilt movement from a remote location. Exclusive controller unit (included) allows not only tilt/head movement, but also controlling an operating speed for the movement. Easy operation. Indoor use only. Ideal for security cameras. AC 100V adaptor is available (sold separately)

Mounting	Horizontal and Upright or Inverted Position
Operating Temperature	-10°C~+45°C
Dimensions	3.5 in. (90mm)W×5.7 in. (144mm)H×4.2 in. (106mm)D mm
Weight	3.19 lbs. (1.45kgs)
Power Source	DC 12V 270 mA max. (8×AA size penlite batteries)
Pan Movement	-150°~+150° in Horizontal Plane
Tilt Movement	-30°~+30° in Vertical Plane
Pan Speed	2.0"/sec~6.5"/sec (Variable)
Tilt Speed	0.7"/sec~2.2"/sec (Variable)
Max. Load	11 lbs. (5.0kgs) in Upright Position / 6.6 lbs. (3.0kgs) in Inverted Position
Max. Cable Length	200 m (by Extending Control Cable)
Mounting Brackets	PT-M2D Ceiling Mount Plate, WH-1,WH-2, WH-4, PT-W3 Wall Mounts(Optional)

CARBON FIBER TRIPOD

**GRAND PRO CF-4**

Ultra large-sized carbon fiber tripod with 36mm diameter carbon fiber pipes for first section leg. About 30% lighter than the same class of our tripod.

Worm gear type center column elevation. 2-way leg-tip (rubber and spike). Soft grip for the first section leg.

Model No.	GRAND PRO CF-4
Max. Height	100.00 in. (2,540mm)
Min. Height	17.70 in. (450mm)
Weight	8.38 lbs. (3.8kgs)
Capacity	44.00 lbs. (20.0kgs)
Leg Sections	Four (4)

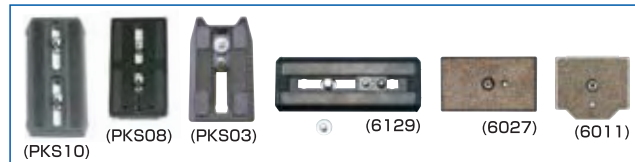
MICROPHONE BOOM POLE



- DAIWA series microphone boom poles offer a low cost light-weight Aluminum boom pole
- Available in three sizes
- Special PU soft grip reduces handling noise
- Black color finish reduces reflection
- Each pole comes complete with a 3/8" mounting screw, as well as an adapter of 5/8" mounting screw

Model No.	Max. Extended Length	Min. Folded Length	Sections	Weight
MB203B	78.74 in. (2,000mm)	29.33 in. (745mm)	Three (3)	1.05 lbs.(480g)
MB263B	102.36 in. (2,600mm)	37.01 in. (940mm)	Three (3)	1.30 lbs.(590g)
MB204B	102.36 in. (2,600mm)	29.53 in. (750mm)	Four (4)	1.58 lbs.(720g)

CAMERA MOUNT PLATES



PKS10 for DAIWA 80, 70, 15 and 11 heads **6129** for DST-32, DST-33 and 515QF
PKS08 for DAIWA 08 head **6027** for DST-1 and 504QFII heads
PKS03 for DST-3 **6011** for 505QF head

CLAMP HEAD



Combination of clamp and camera platform for a variety of use. Available in 3 sizes.



Model No	Pipe diameter to be mounted	Weight
CLAMP HEAD 32	22~32mm	0.88 lbs.(400g)
CLAMP HEAD 38	28~38mm	1.10 lbs.(500g)
CLAMP HEAD 45	35~45mm	1.10 lbs.(500g)

FOOT PAD



DAIWA foot pads are easy to attach, provide stability on smooth surfaces and protect floors that would be easily scratched by spiked tripod feet

PAN HANDLE

**Pan Handle PH10L**

Left-handed telescoping pan handle for SLIK DAIWA 80, 70, 15, 11 and 08 (reversible for right-handed use)

CASE

CASE 1030 UL

Heavy nylon soft-sided case, fitting the No. 207 tripod with smaller fluid heads such as the DAIWA 08

CASE 1080-9

Heavy nylon soft-sided case with reinforced sides, fitting the No. 209 tripod with heavy-duty fluid heads such as the DAIWA 80, 70, 15 and 11

CASE 890-9

Heavy nylon soft-sided case with reinforced sides, fitting the No. 307 and 309 tripod legs with heavy-duty fluid heads such as the DAIWA 80, 70, 15 and 11